



CORE SERIES

Everyday Basics.

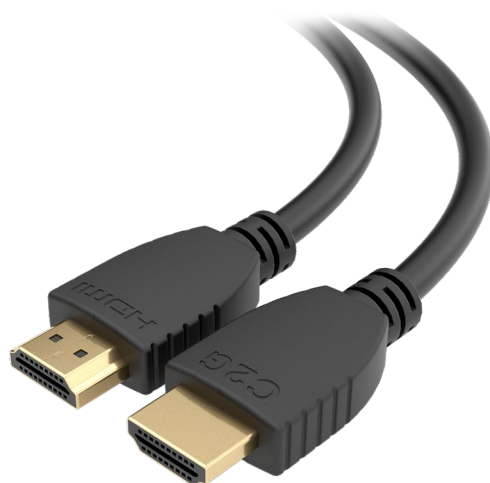
High Speed HDMI[®] Cable with Ethernet - 4K 60HZ

C2G Core Series High Speed HDMI[®] Cable with Ethernet is a versatile solution for connecting a wide range of devices—from computers, projectors, and monitors to home entertainment systems, HDTVs, and gaming consoles. Designed for high-performance audio/video applications, this cable supports video resolutions up to 4K (4096 × 2160) at 60Hz.

Engineered for immersive experiences, it delivers advanced features including 3D video, deep color, Dolby[®] True HD, DTS-HD Master Audio, and support for up to 32 audio channels—creating rich, multi-dimensional soundscapes. The cable also supports Consumer Electronic Control (CEC), enabling seamless communication between HDMI-connected devices.

With built-in Ethernet capabilities, it allows Ethernet-enabled HDMI devices to access interactive online content and perform firmware updates. Gold-plated connectors enhance durability, improve electrical conductivity, and provide superior shielding for reliable signal transmission.

Tested to meet industry standards, this high-bandwidth cable is fully functional and backed by a lifetime warranty, ensuring long-term performance and peace of mind.





CORE SERIES

Everyday Basics.

High Speed HDMI® Cable
with Ethernet - 4K 60HZ

FEATURES

- Supports High Speed resolutions up to 4K (4096 x 2160) at 60Hz
- Supports 3D video for a more appealing and realistic video experience
- Supports 32 audio channels for an immersive audio experience
- Supports CEC extensions for control of consumer electronics devices through a single control point
- Gold plated connectors for increased electrical conductivity and enhanced durability
- Backed by a Lifetime Warranty for peace of mind

Core Series High Speed HDMI® Cable with Ethernet	
56781 or CG56781*	1ft (0.3m) C2G Core Series High Speed HDMI Cable with Ethernet - 4K 60Hz
50606 or CG50606*	1.5ft (0.5m) C2G Core Series High Speed HDMI Cable with Ethernet - 4K 60Hz
50607 or CG50607*	2ft (0.6m) C2G Core Series High Speed HDMI Cable with Ethernet - 4K 60Hz
56782 or CG56782*	3ft (0.9m) C2G Core Series High Speed HDMI Cable with Ethernet - 4K 60Hz
50608 or CG50608*	4ft (1.2m) C2G Core Series High Speed HDMI Cable with Ethernet - 4K 60Hz
50609 or CG50609*	5ft (1.5m) C2G Core Series High Speed HDMI Cable with Ethernet - 4K 60Hz
56783 or CG56783*	6ft (1.8m) C2G Core Series High Speed HDMI Cable with Ethernet - 4K 60Hz
50610 or CG50610*	8ft (2.4m) C2G Core Series High Speed HDMI Cable with Ethernet - 4K 60Hz
56784 or CG56784*	10ft (3m) C2G Core Series High Speed HDMI Cable with Ethernet - 4K 60Hz
50611 or CG50611*	12ft (3.7m) C2G Core Series High Speed HDMI Cable with Ethernet - 4K 60Hz
50612 or CG50612*	15ft (4.6m) C2G Core Series High Speed HDMI Cable with Ethernet - 4K 60Hz
C2G50647	20ft (6m) C2G Core Series High Speed HDMI Cable with Ethernet - 4K 60Hz
C2G50648	25ft (7.2m) C2G Core Series High Speed HDMI Cable with Ethernet - 4K 60Hz
C2G21000	3ft (0.9m) C2G Core Series High Speed HDMI Cable with Ethernet - 4K 60Hz (2-Pack)
C2G21001	6ft (1.8m) C2G Core Series High Speed HDMI Cable with Ethernet - 4K 60Hz (2-Pack)
C2G21002	10ft (3m) C2G Core Series High Speed HDMI Cable with Ethernet - 4K 60Hz (2-Pack)
C2G21003	3ft (0.9m) C2G Core Series High Speed HDMI Cable with Ethernet - 4K 60Hz (3-Pack)
C2G21004	6ft (1.8m) C2G Core Series High Speed HDMI Cable with Ethernet - 4K 60Hz (3-Pack)
C2G21005	10ft (3m) C2G Core Series High Speed HDMI Cable with Ethernet - 4K 60Hz (3-Pack)

*Some legacy systems use the 5-digit part number while others use the CG notation for numbers. Contact your Legrand AV sales representative with questions.



CORE SERIES

Everyday Basics.

High Speed HDMI® Cable
with Ethernet - 4K 60HZ

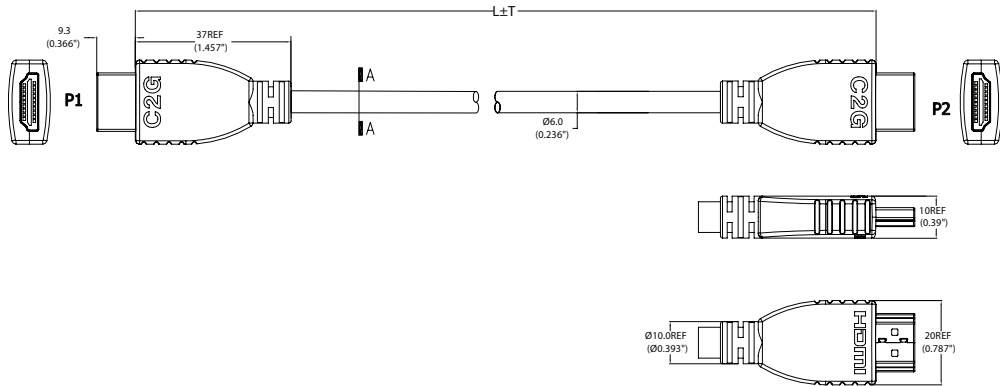
ELECTRICAL SPECIFICATIONS	Conductor Resistance	at 20°C Max 30AWG: 376Ω/km (excluding CG50611, CG50612, C2G50647 and C2G50648)
		at 20°C Max 28AWG: 237Ω/km (CG50611 and CG50612 Only)
		at 20°C Max 26AWG: 150Ω/km (C2G50647 and CG50648 Only)
	Insulation Resistance	10Ω/km min at 20°C DC 500V (all lengths)
PHYSICAL CHARACTERISTICS	Voltage Rating	30V
	Connector Type	HDMI, Type A
	Minimum Bend Radius	48mm (excluding CG50611, CG50612, C2G50647 and C2G50648)
		58.4mm (C2G50611 and C2G50612 only)
		68mm (C2G50647 and C2G50648 only)
	Cable Jacket Rating	VW-1
	Temperature Rating	80°C
	Operating Temperature Range	-20° - 80°C; 20-80% Relative Humidity (Non-Condensing)
	Storage Temperature Range	-20° - 80°C; 20-80% Relative Humidity (Non-Condensing)
	Certifications	RoHS Compliant; CE Marked and Confirms to 2011/65/EU RoHS 2
	Cable Jacket	PVC, Black, Contacts: Brass, Gold Flash
	OD Cable	6.0 ± 0.2mm (excluding CG50611, CG50612, C2G50647 and C2G50648)
7.3 ± 0.2mm (CG50611 and CG50612 Only)		
8.5 ± 0.2mm (C2G50647 and C2G50648 Only)		



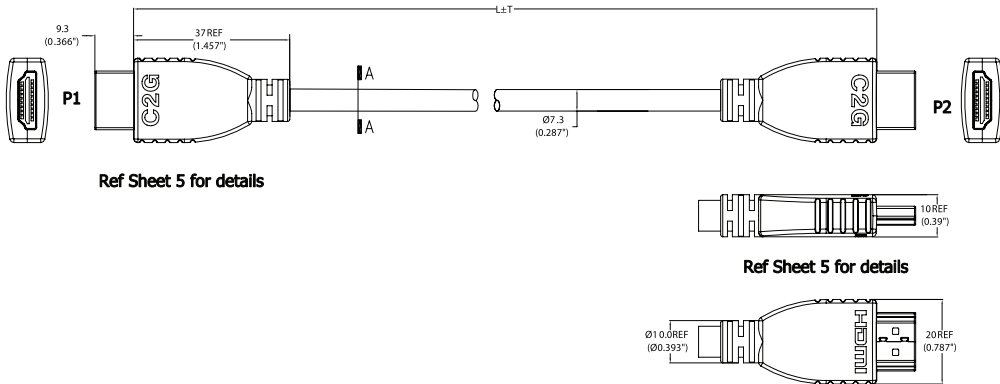
CORE SERIES

Everyday Basics.

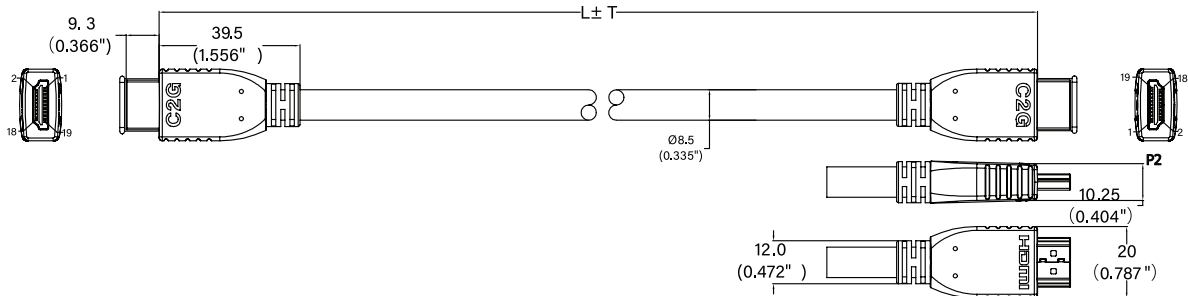
Excluding CG50611, CG50612, C2G50647 and C2G50648



CG50611 and CG50612 Only



C2G50647 and C2G50648 Only



C2G | CHIEF | CONNECTRAC | DA-LITE | LUXUL | MIDDLE ATLANTIC | ON-Q | SANUS | VADDIO | WIREMOLD