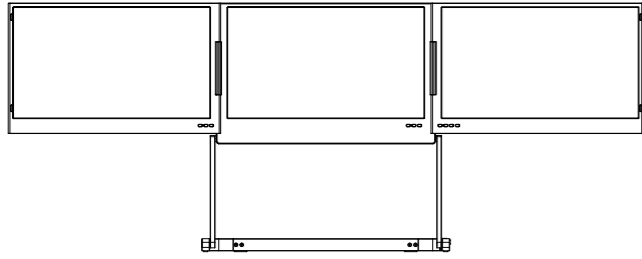
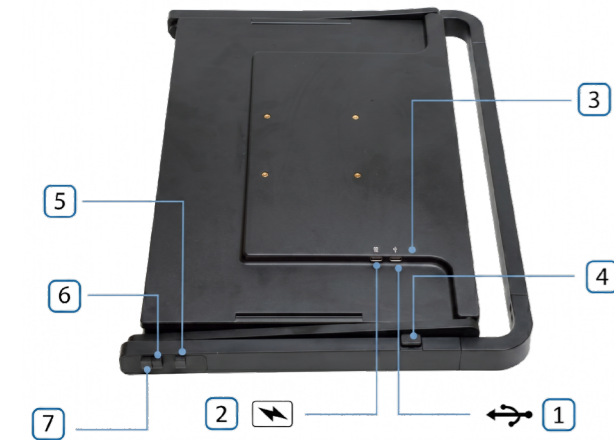
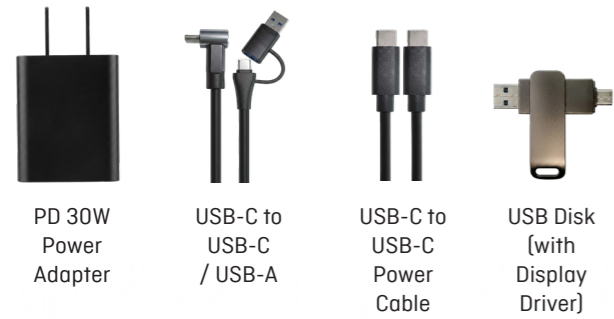


Setup – DOXA Pro 3 Portable Triple Monitor

Packaging Inclusion:



DOXA Pro 3 Portable Triple Monitor



1. Type-C Full Function Port

- USB Type-C 3.0
- Transmits audio and video signals
- Simultaneously supports power delivery

2. Type-C Power Supply Port – for power delivery only

- Green: Power on and monitor connected successfully
- Red: Power off / no signal

4. Screen Lock

5. Resetting Pin

6. First Pin

7. Second Pin

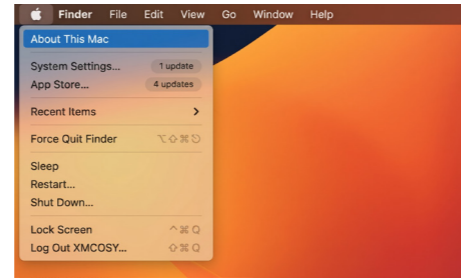
standivarius

Driver Installation

For macOS Laptop

Download the driver from the USB disk or go to

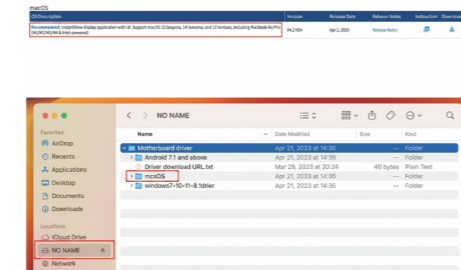
1. Click "About This Mac" on your Macbook



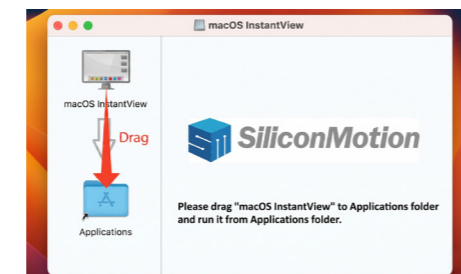
2. Click "Overview" to check your detailed macOS system info.



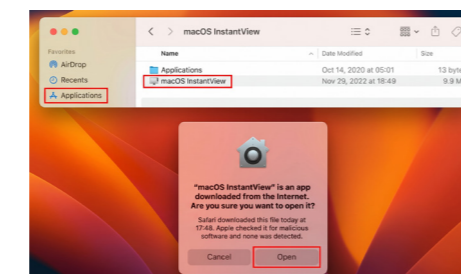
3. Insert the included USB Disk into your Macbook and download corresponding driver based on your macOS system.



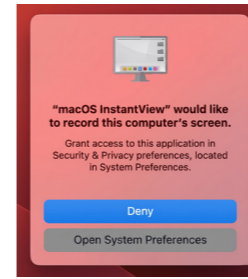
4. Drag the "macOS InstantView" to the "Applications" folder and run it.



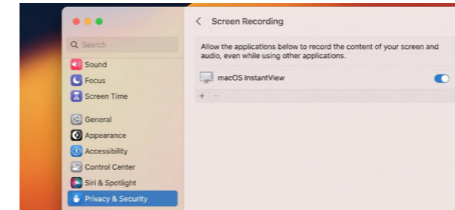
5. Click "macOS InstantView" in "Applications" to run the driver, then click "Open"



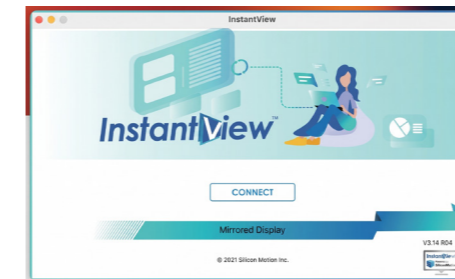
6. Click "Open System Preferences".



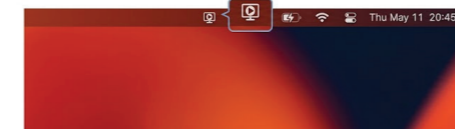
7. Choose "Security & Privacy", click "Screen Recording" and enable "macOS InstantView"



8. Click the "CONNECT" button



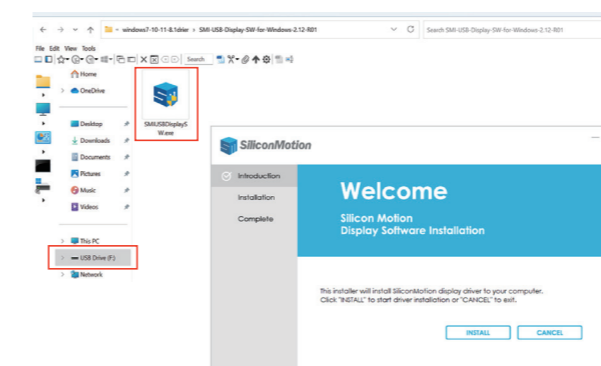
9. A screen record icon will show up once connected successfully.



For Windows Laptop

Download the driver of the Windows system in the USB disk or go to <https://www.siliconmotion.com/downloads/SM770-drivers.html>

1. Insert the included USB Disk into your laptop and download the Windows driver. Click "SMIUSBDisplaySW" then "INSTALL".

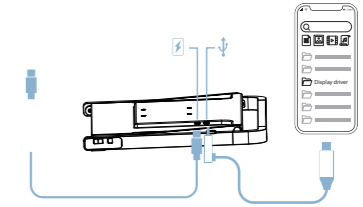


standivarius

For Android Phone

Download the driver of the Android system from the USB disk or go to <https://www.siliconmotion.com/downloads/SM770-drivers.html>

1. Open the mobile phone file management app and install the device driver accordingly

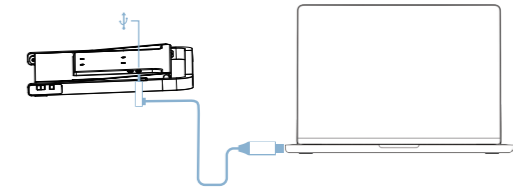


NOTE: not all mobile phones will support external display due to the function of phone port

Connection Method

Single Connection

Connect the USB-C cable to your laptop.

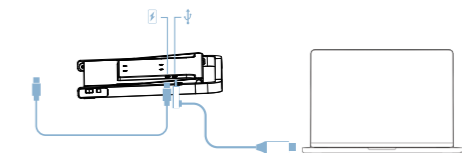


NOTE: After the display driver is installed, at least 30W of sustained power is required to receive a signal.

Cable Connection Methods if Additional Power is Required

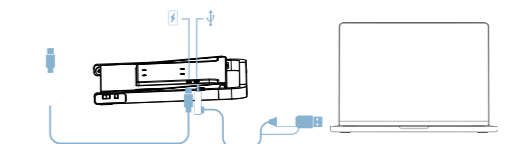
Laptop computer connection mode

Connect the device to your laptop using the USB-C cable and ensure the external power source is plugged in.



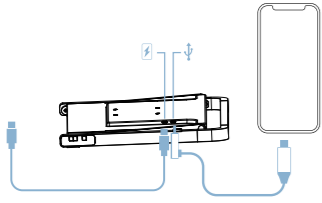
USB-C to USB-A converter head connection mode

Use a USB-C to USB-A converter to connect the device to your laptop, then connect to an external power source.



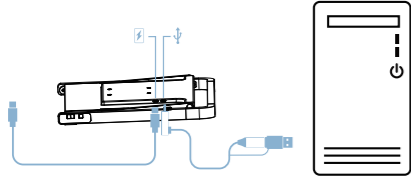
Mobile phone connection mode

Connect the device to your mobile phone using a compatible cable and ensure it is powered via an external power source.




Desktop computer connection mode

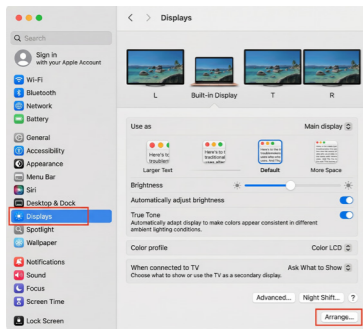
Connect the device to your desktop computer using the appropriate cable and plug in the external power supply.



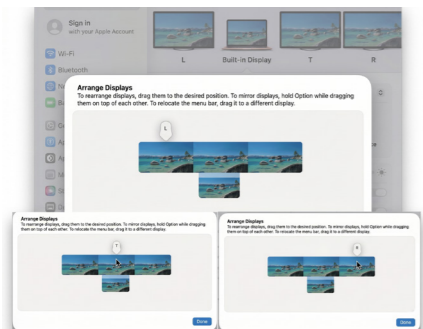
Display Settings and Configuration

For macOS

1. Click the System Settings icon  in the Dock or select Apple menu > System Settings.
2. Click "Display" then go to "Arrangement". Next, click and drag the display(s) to rearrange their location based on your preference.

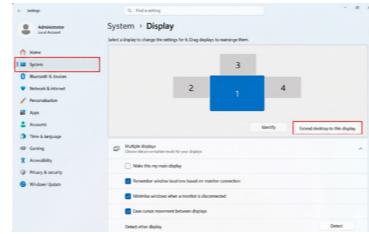


3. Choose the display mode you prefer (Main display/Extended display/Mirror)

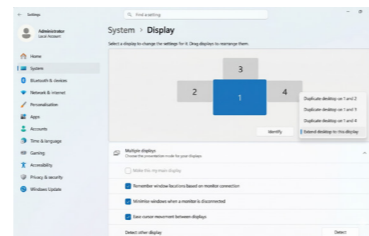


For Windows

1. Right-click the desktop and select Screen Resolution (Windows 7/8) or Display Settings (Windows 10/11).
2. Click "Detect" to check whether the triple monitor setup is connected successfully. If it is detected, click "Identify" to confirm each screen's location. Then click and drag Screen 1/2/3/4 to rearrange the displays according to your preference.



3. Duplicate & Extend Mode Setting: Click the "Multiple displays" drop-down menu, then select "Extend or Duplicate."



How to close the Single-Display

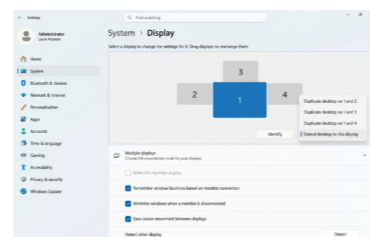
For macOS and Windows Laptop

Long-press the "MENU" key for 5s.



For Windows Laptop

In "Display Setting", select the display screen you want to disconnect and click "Disconnect this display" in the drop-down list.



OSD Function Introduction



Power Button – Long-press for 3 seconds to turn the monitor on or off.

"+" Button

- Quickly adjust brightness
- Navigate to the OSD sub-menu
- Increase or decrease the selected OSD setting value

Menu Button

- Press to enter the OSD menu
- Press again to enter a sub-menu and confirm selections


"-" Button - Decrease or adjust the selected OSD setting value

Note:

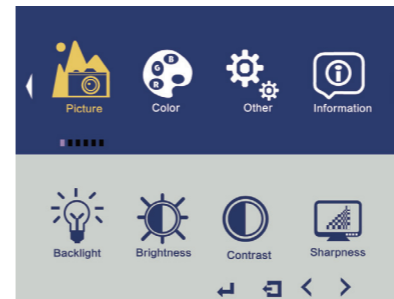
If no action is taken, the OSD menu will automatically disappear after a few seconds. You can also press the "-" button to exit the OSD menu.

Restore OSD Default

If you accidentally change the OSD language or settings, follow the steps below to restore the default values:

1. Press the "MENU" button.
2. Press the "+" button to navigate to the reset option , then press the "MENU" button to confirm.

OSD Menu



Picture	Brightness	The adjusting range is from 0 to 100
	Backlight	The adjusting range is from 0 to 100
	Contrast	The adjusting range is from 0 to 100
	Sharpness	The adjusting range is from 0 to 100
Color	Temperature	9300/7500/6500/5800/sRGB/User
	Color Effect	Standard/Game/Movie/Phone/Vivid
	HUE	The adjusting range is from 0 to 100
	Saturation	The adjusting range is from 0 to 100
Other	Reset	Selects RESET to revert all settings to the factory default mode
	Menu Time	The adjusting range is from 10 to 60
	OSD H Position	The adjusting range is from 0 to 100
	OSD V Position	The adjusting range is from 0 to 100
	Language	English, Chinese, Japanese, German, French and etc.
Transparency	The adjusting range is from 0 to 100	

FAQs

Questions	Answer
The screen flickers or disappears for a moment	Your laptop battery is low. Please use attached 30W power adapter to charge this triple monitor.
The triple monitor screen goes black	When your laptop enters sleep mode, the monitor also goes to sleep mode. Please wake up your laptop and press the display screen power button to wake up the monitor.
The triple monitor shows "no signal"	1) Please make sure that your laptop comes with a full-function Type-C port, which supports video output, or the monitor will fail to be connected; 2) Please make sure that your laptop could provide at least 30W power, or please plug included power adapter to power the monitor up; 3) Please replace the USB-C to USB-C cable to test if the cable is damaged. Note: The USB C-C cable should be USB C 3.1 Version which supports video output; 4) If the monitor still shows "no signal", please feel free to contact us.
The stand seems unstable	Please ensure you have fully opened the kickstand and the 3-screen display.

Use Requirements, Cleaning & Maintenance

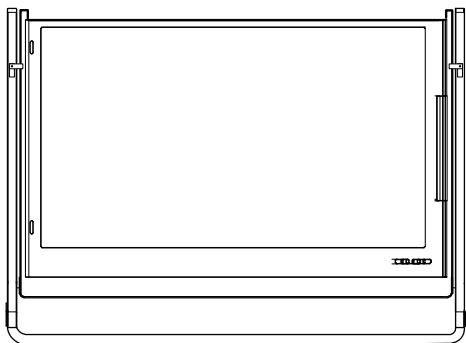
To ensure safe use of this product and prevent accidents such as electric shock or fire, please read and understand all usage instructions and operating procedures before using it.

Please strictly follow the guidelines below:

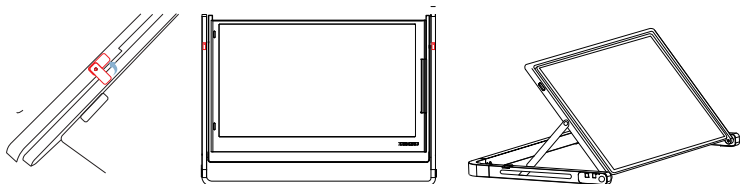
- Avoid excessive humidity and dust, as these may cause circuit corrosion or malfunctions.
- Do not press or squeeze the screen surface. Use a soft screen cleaner to clean the monitor. Do not connect the monitor to any devices while cleaning.
- Do not use cleaning solutions containing alcohol or acid on the screen.
- When the monitor is not in use, disconnect the power supply.

How to open and setup the monitor

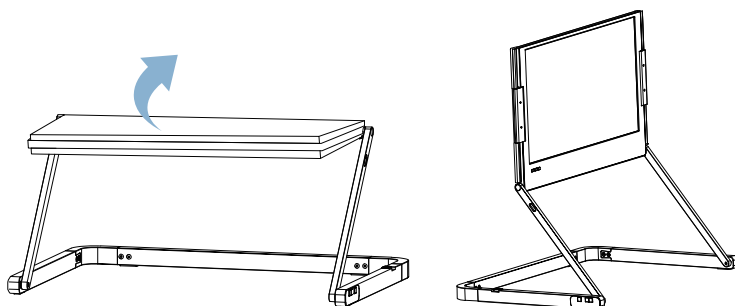
1. Place the DOXA Pro 3 on your desk, oriented as shown in the diagram.



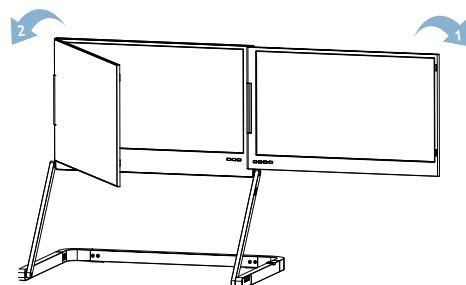
2. Rotate the protective handles to unlock the screens, unfold the stand as shown, and secure it in place.



3. Rotate the folded monitors approximately 135° until they are straightly aligned.

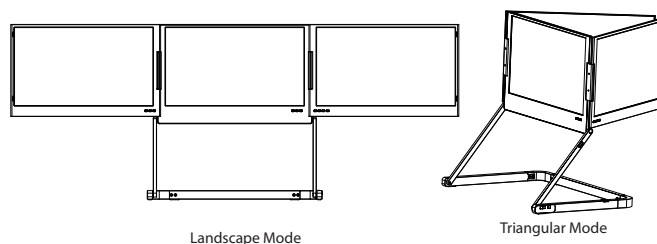


4. Unfold the triple monitors and adjust them to your preferred viewing angle.



Note: The correct sequence should be performed to avoid any damage to the device

5. Adjust the monitors to the best viewing angle for you.



6. To fold the Doxa Pro 3, fold the left display screen, and then fold the right display screen. Then follow steps 3 to 1 in reverse order.

