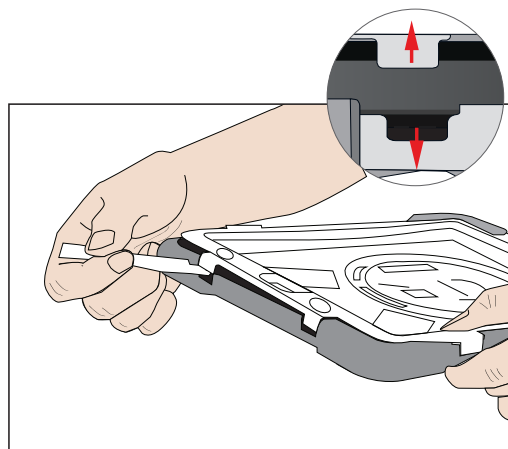


# MULTI - FUNCTION RUGGED CASE

## INSTALLATION GUIDE

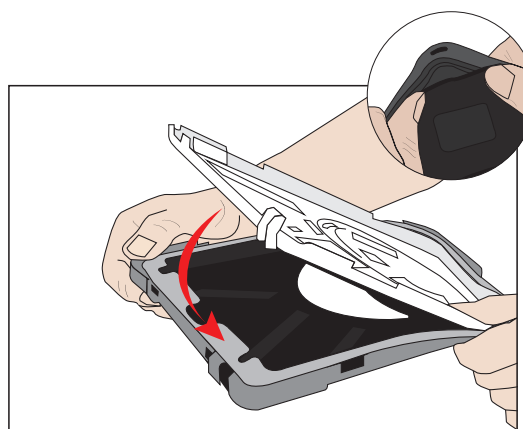
### STEP 1

Using the installation tool provided, remove the front cover by opening the 4 side clips.



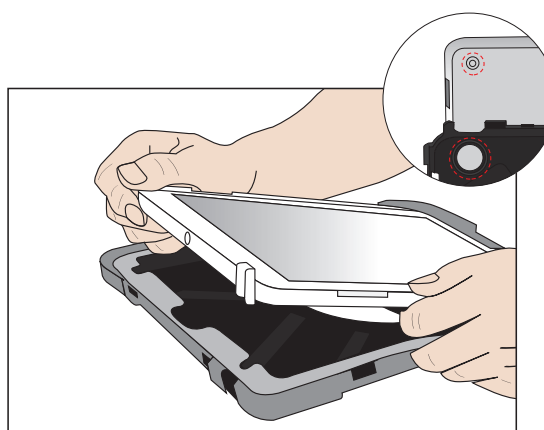
### STEP 2

From the top of the case, gently peel the silicone rubber exterior away from the hard plastic back plate until the top is exposed.



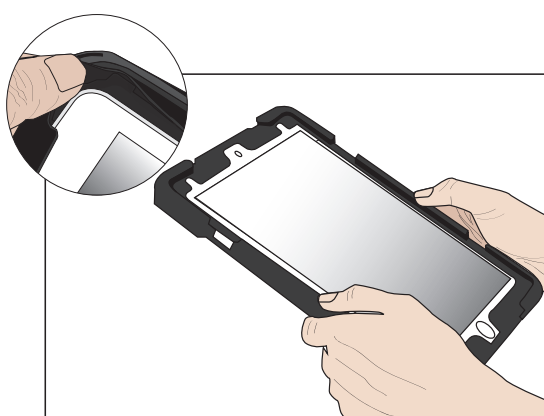
### STEP 3

Place the tablet into the hard plastic back plate making sure it's positioned in the correct orientation.



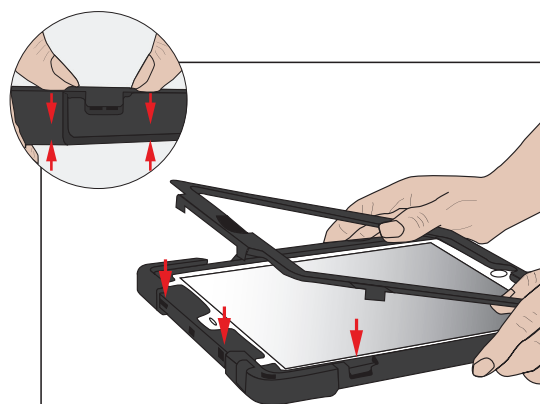
### STEP 4

Reinstall the silicone exterior. Gently ease and adjust the cover until it correctly fitted around all ports, buttons and the camera lens.



### STEP 5

To replace the front cover, starting at the sides press each clip back into position.



### NOTE

Open: Open the stand and press it into the slot to secure the stand.

Close: Pull the stand when not in use

eschner  
function with emotion