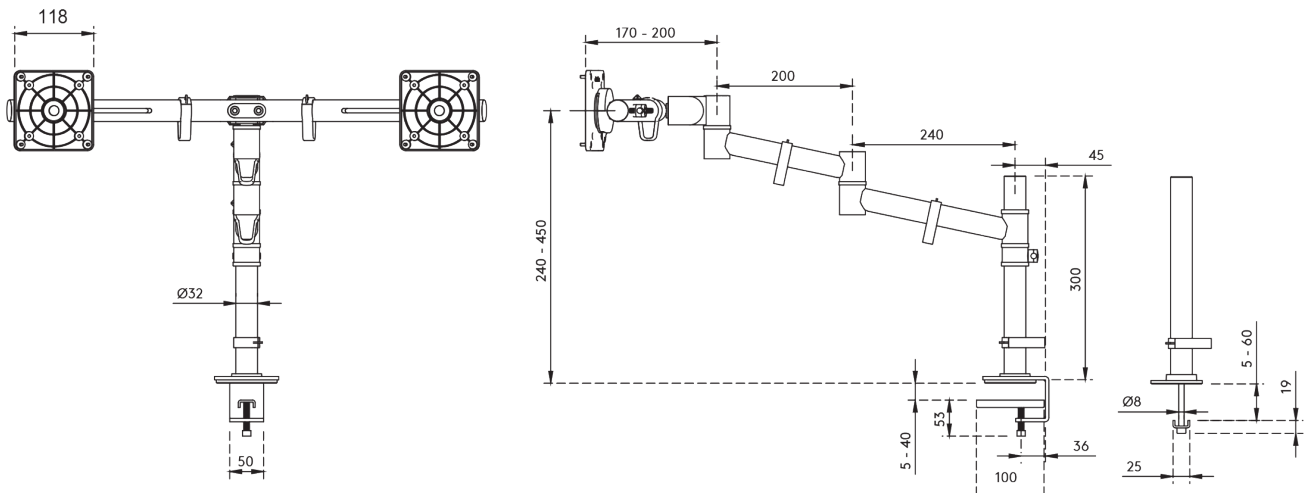
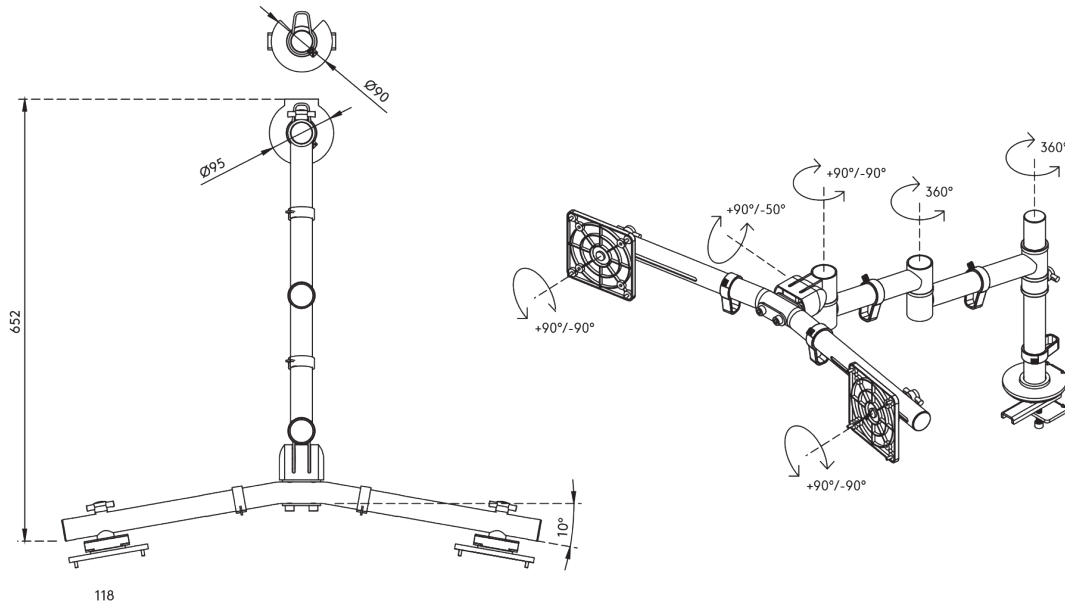


48.133

Viewgo monitor arm - desk 133

This ergonomic dual monitor arm is designed to increase both comfort and desk space. Suitable for two monitors up to 4 kg and 27 inch each. Easily position your monitors above your desk at the perfect height, angle and depth to support healthy posture and reduce clutter. With its slim yet durable steel construction, this monitor arm not only saves space but also adds a modern touch to your setup. Perfect for home and office use.

- Static height adjustment of 210 mm (8,3")
- Independent depth adjustment for optimal viewing distance
- Fitted with cable clips to guide cables tidily
- Made from durable steel for strength and stability
- ISO 9241-5 compliant: Designed in accordance with ergonomic requirements for visual display workstations
- Compatible with VESA MIS-D 75 x 75 / 100 x 100 mm
- Full monitor flexibility: tilt +90°/-50°, swivel +90°/-90°, rotate 360°
- Arm: swivel 360°
- Monitor Quick-Release system for fast and secure mounting
- Supports up to 4 kg (8,8 lb) and 27" per monitor
- Crossbar design ensures perfect alignment and supports up to 630 mm (24,8") width and 900 mm (35,4") height per monitor
- Mounts using either desk clamp or bolt-through
- Fits desktops from 5 to 40 mm (clamp) or up to 60 mm (bolt-through)
- Supports both portrait and landscape orientation for versatile use
- Simple height adjustment using a tightening knob
-



Viewgo monitor arm - desk 133

2026/01/09


48.133

 770 x 218 x 123 mm

 1 pcs

 black

 4,090 kg

 805410481339